

Wi-Fi CERTIFIED™ ac:

The latest generation of interoperable,
high performance Wi-Fi® products

June 19, 2013





Agenda

- Introduction
- Global demand for connectivity and adoption of advanced applications
- Wi-Fi CERTIFIED™ ac is here
- Thank you!

Wi-Fi Alliance: The worldwide network of companies* bringing you Wi-Fi



*Full list of over 550 members at <http://www.wi-fi.org/about/member-companies>

Wi-Fi Alliance at a glance

A faint, light-colored outline of a world map serves as the background for the central text and callouts.

**Industry-leading
collaboration forum**

**500+ member
companies
worldwide**

***Seamless
connectivity***

**About 15,000
Wi-Fi CERTIFIED™
products**

**About 15 distinct
new projects
underway today**

Global Demand for Connectivity and Adoption of Multimedia Applications



The Wi-Fi household of today: more devices, more applications

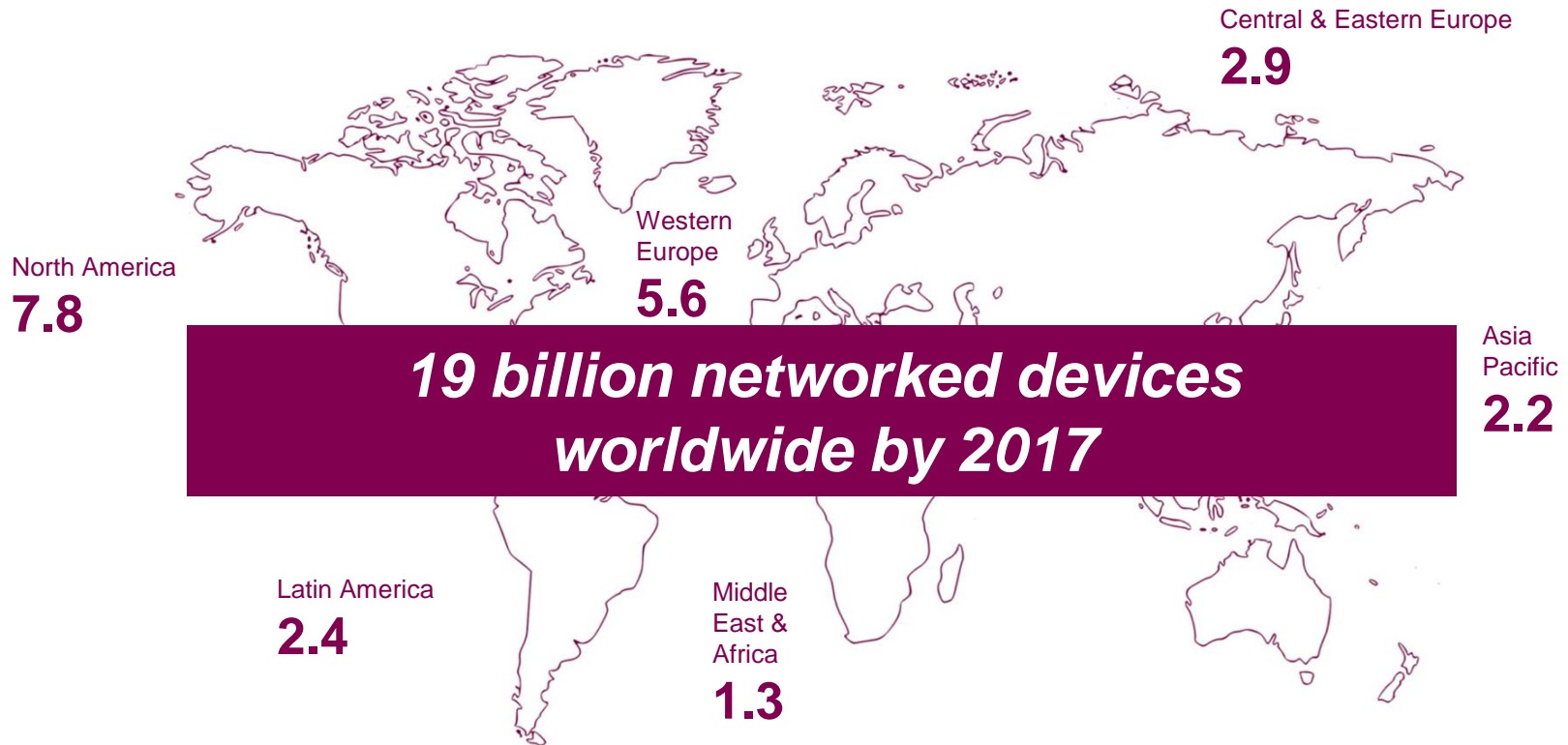


- The average number of Wi-Fi devices in U.S. households has doubled over the past five years
- There is an average of four devices now connected to the home Wi-Fi Network during peak usage times
- On average more than half of respondents said they could only go a day or less without connecting their devices to Wi-Fi
- Shift to higher-definition forms of video and Wi-Fi video distribution in home
- 60% of users report they use Wi-Fi for multimedia applications more now than three years ago
- Among younger adults, Wi-Fi is more essential than traditional forms of entertainment like television



Source: Wakefield Research poll on behalf of Wi-Fi Alliance, June 2013

Number of devices per capita by 2017



Wi-Fi CERTIFIED ac: Interoperability Certification has Begun



Wi-Fi CERTIFIED ac extends a 10+-year legacy of product interoperability



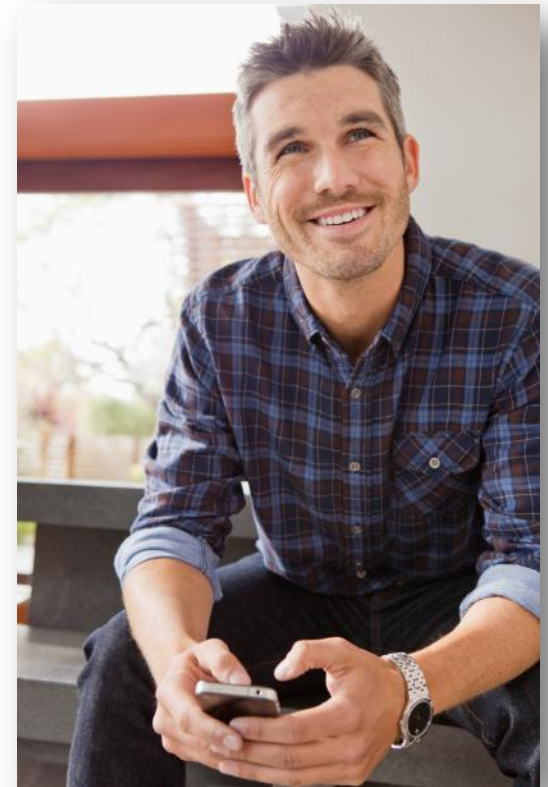
“The latest generation of the technology, Wi-Fi CERTIFIED ac, preserves interoperability, which has been the foundation for the technology’s success, and will enable product manufacturers to continue to explore new avenues for wireless connectivity.”

–Phil Solis, ABI Research

Wi-Fi CERTIFIED ac: High-performance Wi-Fi for homes, hotspots, and enterprises



- Wi-Fi's latest generation has arrived – and industry-wide interoperability validation is in place
- Builds on Wi-Fi CERTIFIED n and interoperates with legacy 5 GHz devices
- Dual-band (2.4 and 5 GHz) networking products will be very widespread
- Wi-Fi CERTIFIED ac products will be useful to address congestion and improve performance
- Mobile device vendors are implementing ac now in smartphones and tablets
- [ABI Research](#): 40% of smartphones will support ac this year



Wi-Fi CERTIFIED ac products: Key benefits

- **Higher data rate** – Delivering data rates up to 1.3 Gbps – more than double that of a typical Wi-Fi CERTIFIED n network
- **Higher capacity** – More devices can be simultaneously connected to a Wi-Fi CERTIFIED ac network without reducing performance to address congestion challenges
- **Lower latency** – Wi-Fi CERTIFIED ac products can deliver a higher-quality user experience with applications such as gaming or streaming music, where even the slightest delay can have a detrimental impact
- **Efficient power usage** – Enhancements in Wi-Fi CERTIFIED ac mean less power consumption when transmitting data



Wi-Fi CERTIFIED ac products: Whole-home coverage for demanding applications



- Wi-Fi CERTIFIED ac devices can handle demanding applications such as HD video, multimedia, and rapid file transfer
 - Transfer an HD movie to a tablet in under 4 minutes
 - Share photo albums with friends in seconds
 - Stream three HD-quality videos at one time
- Videos are delivered reliably despite other network activity and other Wi-Fi devices
- Wi-Fi CERTIFIED ac networks can handle devices based on older Wi-Fi technologies without significant performance degradation



Wi-Fi CERTIFIED ac products that form the interoperability test bed

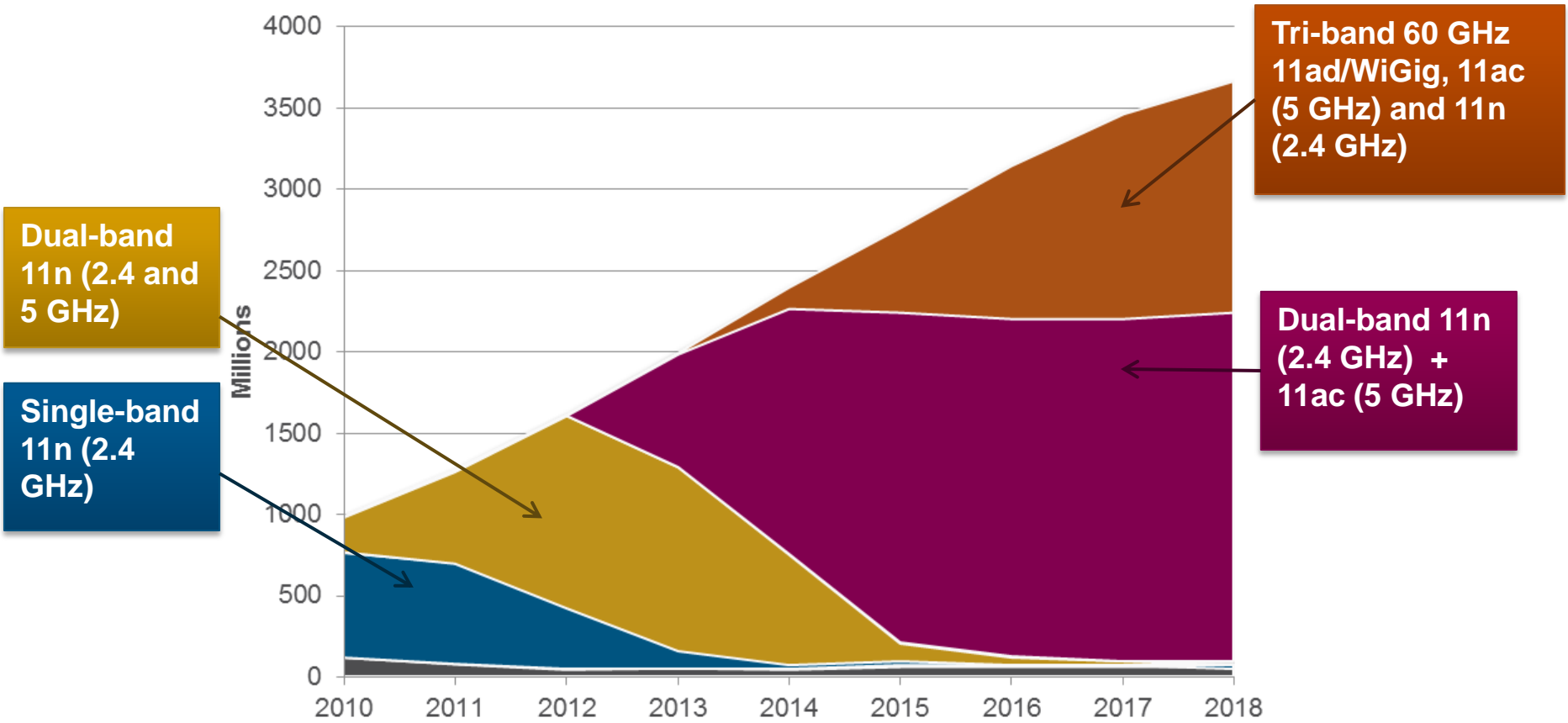


- Broadcom BCM4360 5G WiFi Single Chip MAC/PHY/Radio for Clients and Routers
- Intel® Dual Band Wireless-AC 7260
- Marvell Avastar 88W8897 AP Reference Design
- Marvell Avastar 88W8897 STA Reference Design
- Mediatek Dual Band 802.11ac Reference Access Point
- Mediatek Dual Band 802.11ac Reference STA
- Qualcomm® VIVE™ 802.11ac 3-stream Dual-band, Dual-concurrent Router
- Qualcomm® VIVE™ 802.11ac 3-stream, PCIe Client
- Realtek RTL8197D+RTL8188AR+RTL8192CE AP/Router
- Realtek RTL8812AE HMC card

Wi-Fi CERTIFIED ac plays a big role in the future of connectivity



Wi-Fi and WiGig Chipset Shipments by Frequency Band (Millions of Units)



Source: ABI Research, February 2013



Thank you!

- Wi-Fi CERTIFIED ac is the highest performing Wi-Fi available – ready for today's demanding usages and taking us into the future
- Certification began June 11; testing and [certification of commercial products](#) now underway
- ac-certified devices will deliver whole-home coverage and can handle demanding applications such as HD video, multimedia, and rapid file transfer
- www.wi-ficertifiedac.com for white papers and additional materials

Contact us:

Karl Stetson

Edelman for Wi-Fi Alliance

Karl.stetson@zenogroup.com

206.297.5943

Follow us:

www.wi-fi.org



@wifialliance



Facebook.com/wificertified



@wifialliance官方微博

Background Information

Wakefield Research Data

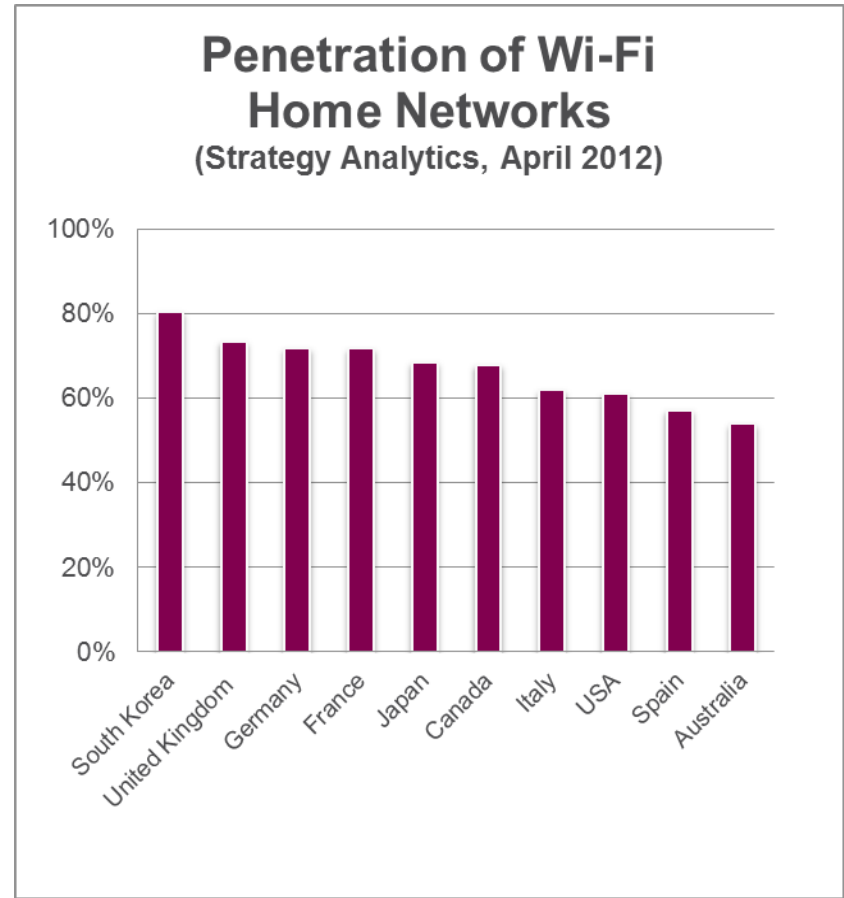
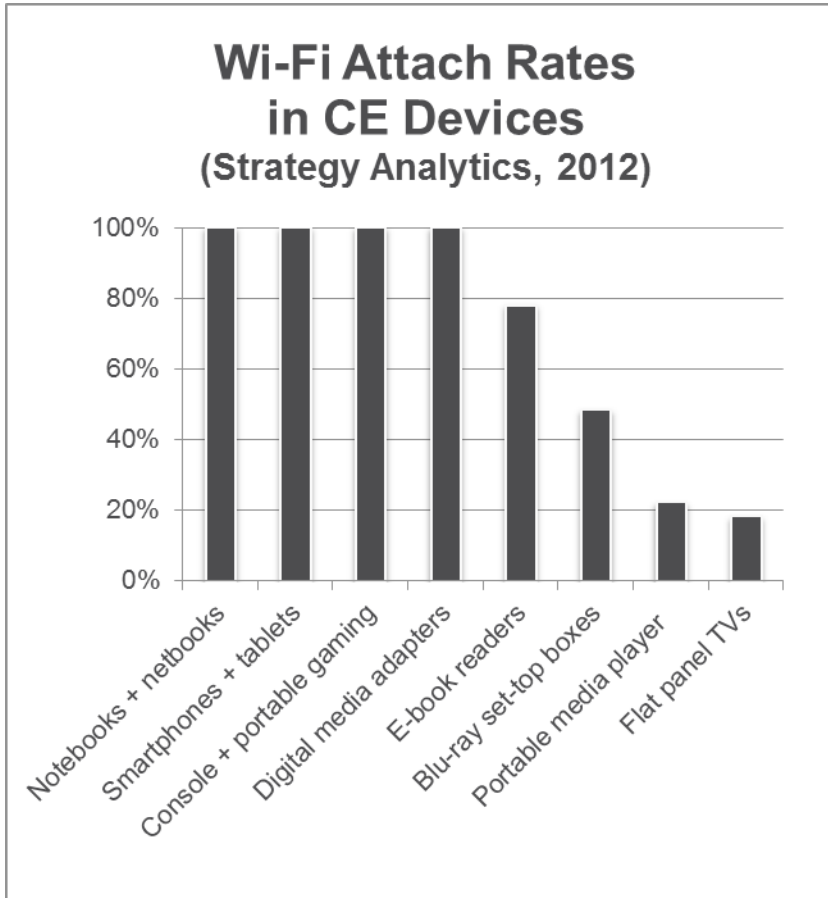




Methodological note

- *The Wi-Fi Alliance Survey was conducted by Wakefield Research among 1,000 U.S. adults, ages 18 and older, between June 4th and June 11th, 2013, using an email invitation and an online survey. Quotas have been set to ensure reliable and accurate representation of the U.S. adult population 18 and older.*
- *Results of any sample are subject to sampling variation. The magnitude of the variation is measurable and is affected by the number of interviews and the level of the percentages expressing the results. For the interviews conducted in this particular study, the chances are 95 in 100 that a survey result does not vary, plus or minus, by more than 3.1 percentage points from the result that would be obtained if interviews had been conducted with all persons in the universe represented by the sample.*

Wi-Fi is the technology to connect content and applications: nearly universal adoption



More than 5 billion Wi-Fi units shipped since 2000; about 1.5 billion devices to ship this year*

More than 800 million home networks worldwide by 2016**

*ABI Research
**Strategy Analytics